



The Turning Point

The newsletter of the Siouxland Woodturners
Chapter of the American Association of Woodturners

September 2012

In this issue...

News Items Page 1
Upcoming Meeting Notes Page 1
President's Column Page 2
Getting to Know Us Page 3
Woodturning Basics Page 4
At the Last Meeting Page 5-7

SF Sidewalk Arts Festival

The Sidewalk Arts Festival on Saturday, September 8th was a huge success. Our booth was busy all day with visitors and onlookers. We were able to provide a great deal of information about our club to the public and got a lot of exposure.

Thanks to Doug Noteboom for organizing this event and to all of the members who helped at our booth throughout the day. Also, thanks to Doug's daughter-in-law for sharing booth space with us.

Getting to Know Us and Woodturning Basics Columns...

Due to shortness of time there is not a GETTING TO KNOW OUR US column this month.

The WOODTURNING BASICS column this month features the design elements of spindle turning and a description of some of the more common spindle turning profiles.

Upcoming Meeting Notes

Saturday, October 6, 2012

1:00 PM

Paul Sova's Shop

5104 S. Jasmine Trail Sioux Falls

Segmented Turning

From Minnesota Ave. & 57th St., go south on Minnesota Ave., Turn west onto West Ralph Rogers Road, Turn north on South Jasmine Trail.

OR

From 57th St. and Western Ave, go east on 57th to Caraway Dr. Take Caraway Dr. to Jasmine Trail, and then go south to Jasmine Trail.

Please bring a chair if possible!

Fall Turn-Off...

The challenge for the fall turn-off will be SPINDLE TURNING. This would include anything that is NOT a bowl and that at some point in the turning process was mounted between centers on the lathe. The project may include some face plate or chuck mounting but must also include some between centers work.

The date for bringing your completed item to a meeting will be announced at a later date. Get busy with some spindle work and get involved in this friendly "competition".

From the President...

It is going to be an education at next months meeting at Paul Sova's shop. Paul's work is outstanding and to get there you need ability, a process, technique and equipment. Come and see that all come together on OCT 6th at Paul's shop. As has been instructed, bring a chair, your item to show or discuss, and learn something new.

As a reminder of things ahead, our November meeting will be a focus on two things. First is a wrap up of the Fall Turn-Off, so bring in your items "other than a bowl", for display and the "wow factor" from friends and judges. Second we will need your items for the Christmas tree decoration, whether they hang on or set under the tree, be thinking ahead and helping decorate.

If any of you need club supplies between meetings feel free to call me at 605-359-2991 and we can work out delivery.

Have a great week until we see you at Paul's.

Doug Noteboom



Getting to Know Us...

Due to the short amount of time between the September and October meetings, there will not be a “Getting to Know Us” column in this issue.

I thought I would use this space to share some other news...

Stan Houston in Sioux Falls recently got their first Serious Lathe in stock. They had hoped to have this lathe in their store for our demo in February but shipping delays did not allow for that.

If you are not familiar with the Serious Lathe it is over $\frac{3}{4}$ of a TON of cast iron! I believe the Serious web site lists it at **1580 pounds!** I got a chance to drool, I mean look it over, when I was there last week. Looks like a sweet machine.

Speaking of lathes and Stan Houston, they have a couple of used lathes in stock that some of you might be interested in checking out.

The first is an older Delta lathe. It looked to be about a 12” swing and seemed to be in good condition. It seemed to be a good price at around \$800.

The other is an older model Powermatic (back when they were green, not gold as they are now). It has had some work done on it. The paint has been touched up here and there and the motor has been replaced. I didn’t get a price on it but it might be worth checking out if you are in the market for a bigger lathe.

WOODTURNING BASICS

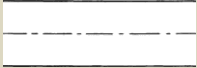
Spindle Turning Profiles by Royce Meritt

I stumbled across an interesting on-line resource of woodturning information that I used to help compile the following information. "Project Gutenberg" takes books that have long been out of print and publishes them in electronic format for use in the public domain. This means that these publications are free to use, copy, publish and distribute since no one owns the copyright. The link below will take you to an interesting book published in 1919 titled "A Course in Wood Turning" by Archie S. Milton and Otto K. Wohlers. Feel free to follow the link and print a copy for yourself. It really is pretty amazing!

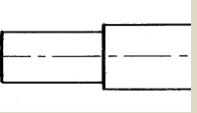
<http://www.gutenberg.org/files/15460/15460-h/15460-h.htm>

One of the most difficult things, for me at least, is to take the vision I have for a turning and actually produce that shape on the lathe. Since our "Fall Turn-Off" is spindle turning projects, I thought this would be a good time to examine some of the basic profiles used in spindle turning and how to go about incorporating those profiles into more complex work. Once one has mastered just a few basic elements it becomes easier to produce more intricate pieces. There are really only a few of these basic profiles that one should master. Let's take a look at them.

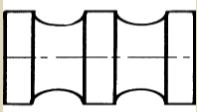
Straight Cuts: As its name implies, straight cuts produce a work piece in which the "edges" are straight and parallel with each other along the length of the piece (or section of the piece). This cut is best produced with either a spindle gouge or skew chisel. Once mastered, the skew can produce a much smoother surface.



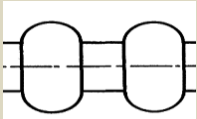
Shoulder Cuts: Shoulder cuts are really nothing more than a straight cut that meets a different element. Cutting a tenon on the end of a chair spindle would be an example.



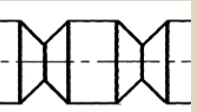
Cove Cuts: Cove cuts produce a work piece such as one the pictured below. Varying the depth and width of a cove can have a dramatic effect on the final product. When cutting coves one should always cut "downhill" from the outer edge of the cove, down and to the center, and then from the other outer edge to the center. Coves can easily be produced using a spindle gouge. Some turners can turn wide, shallow coves with a skew. If a cove is very deep or narrow, it can be difficult to keep the bevel in contact with the wood resulting in a nasty catch.



Beads: Beads might be thought of as the opposite of a cove, like the picture below. Like a cove, varying the dimensions of a bead can affect the overall appearance of your work. Careful planning of the height and width of your beads will lead to pleasing results. Both spindle gouges and skew chisels are effective for turning beads. A skew can be more efficient because a skew might make it easier to blend your beads with other design elements in your design. As with many cuts, a skew can produce a much smoother surfaces than a gouge.



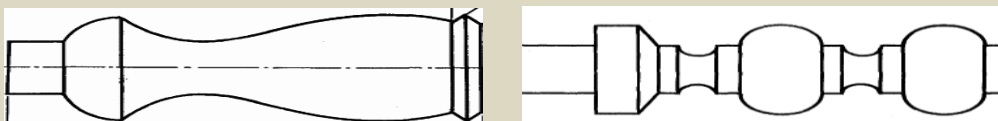
V Cuts: V cuts are somewhat related to cove cuts but with angled sides as opposed to the sloping sides of a cove. V cuts can be very narrow or quite wide as well as shallow or deep. A skew chisel is really the most effective tool for cutting V's as it is the best for producing the fine, accurate cut at the bottom of the V. Very fine V cuts can be a good way to produce delicate separation between other design elements.



Taper Cuts: As the name implies, a taper cut is simply a cut that tapers from one diameter to another. Take care to make sure your tapers are actually tapers and not a very wide and shallow cove or bead! A skew is certainly the best choice of tool for producing tapers but a spindle gouge will work also.



Combination Cuts: By combining the above profiles you can produce a wide variety of projects and designs.



How many of the different profiles can you pick out from these two combinations?

At the September Meeting...

Siouxland Woodturners
September 2012 Minutes

- Meeting Called to order at 1:05 by President Doug Noteboom
- Introductions, opening comments and door prize
- Approve previous minutes
- Approve treasurer's report \$729.22
- Newsletter Report
- Library Report
- Membership Report

Old Business

1. AnchorSeal available for \$10/gallon and Methanol available for \$5/gallon
2. Medium & Fine foam sanding pads also available; 7 pads/\$5
3. Report on Sidewalk Arts Festival
4. Fall Turn-Off; "Anything but a Bowl"
 - a. Discussion of possible categories
 - b. Decided to wait until pieces are brought in to determine categories
 - c. Judging at November meeting
5. Festival of Trees
 - a. Ron S., Corky M. & Royce M. will purchase tree
 - b. Bring ornaments and gifts to November meeting
 - c. Royce will submit necessary paperwork
 - d. Decorate at November meeting

New Business

1. Topic for October meeting will be segmented turning
 - a. Meeting at Paul Sova's shop in Sioux Falls
 - b. Gene Wubben will assist with arrangements and also assist with demo if needed
 - c. Directions to Paul's shop in newsletter and on web site
2. Discussion of future meeting topics and demos
3. President Noteboom reported that Matt Z. has moved his studio to downtown Sioux Falls
4. Sioux City, IA pen turners Rick & Sue Ellison would like to attend a future meeting and do a demo
 - a. Cast Snake Skin, Feathers, etc.
 - b. They had a large display at Sidewalk Arts Festival
 - c. Possibly at Jan/Feb 2013 meeting
5. Jim Sample should report on the Denver Woodturning Symposium/Hat Turning at the next meeting
6. Doug showed a variety of tools and carbide cutters he uses for turning alabaster
7. Adjourn

- Show and tell
- Pick up items for purchase
- Demos in shop
 - Alabaster turning
 - Royce's shop made tools
 - Natural edge bowls
 - Sharpening

Respectfully submitted
Royce Meritt, Acting Secretary

Doug demonstrating how he turns Alabaster...



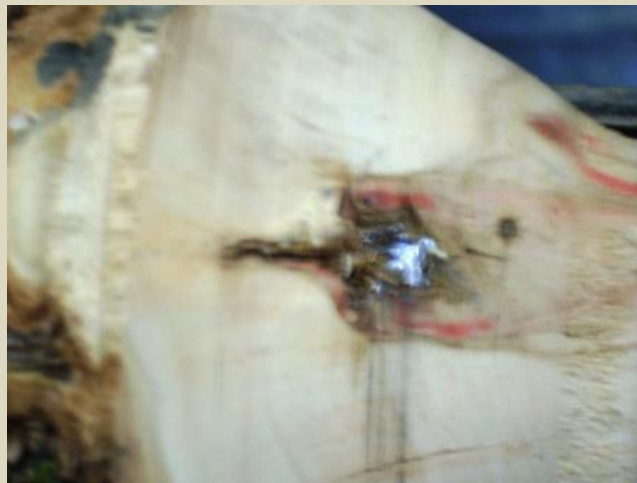
Some of Doug's Alabaster Pieces...



Royce showing his texturing tool made from a grinding wheel dresser...



Gene working on a natural-edge bowl...



Look what Gene found in this piece of Boxelder!
By golly, I think it's a bullet!